

1

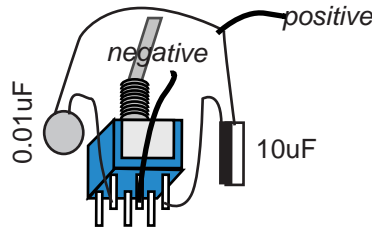
Remove the 10uF cap from the main board

2

Run two wires to main board, replacing the 10uF cap. Attach these two wires to a DPDT switch and two caps, as shown in the picture.

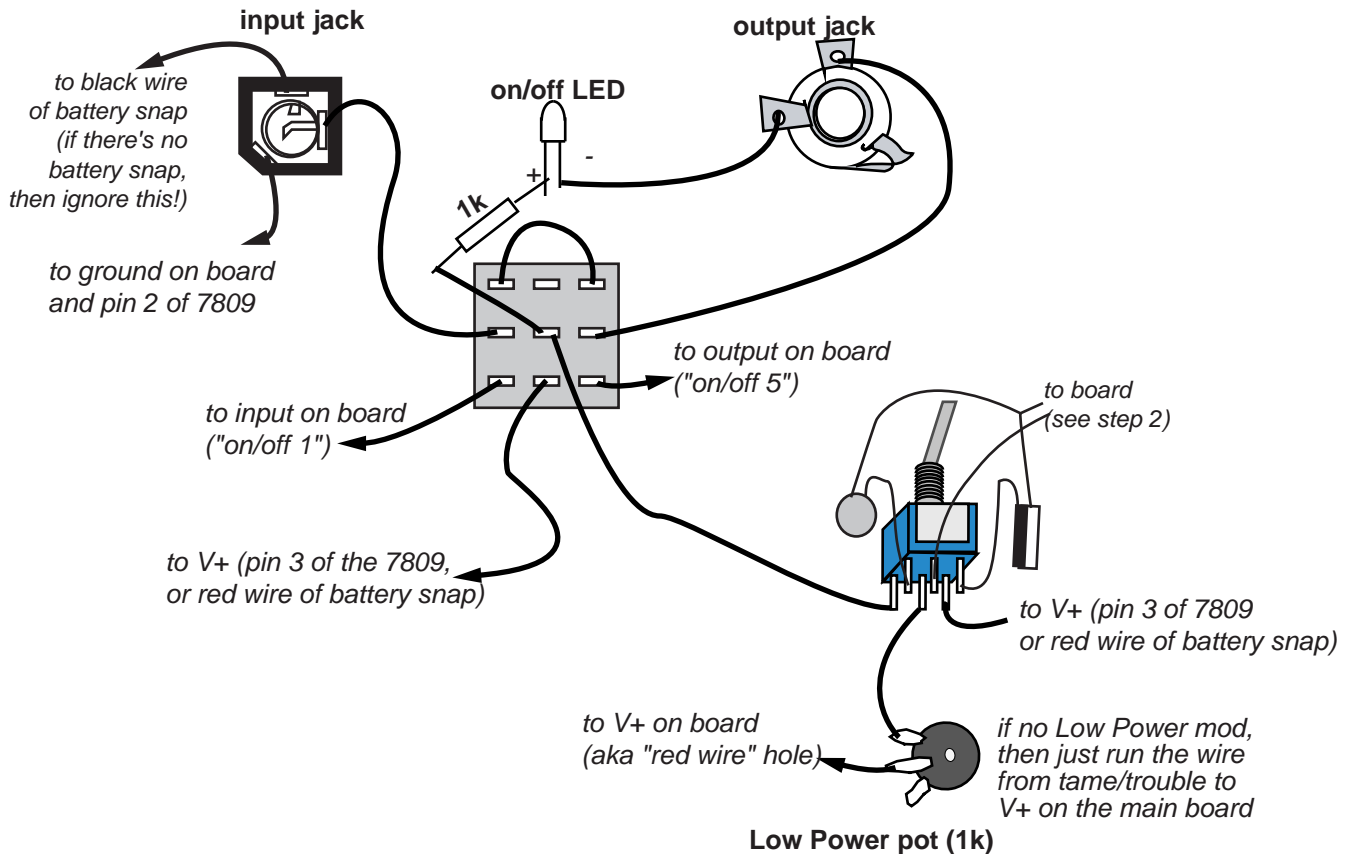
NOTE 1: The wire labelled "negative" goes to where the - end of the 10uF cap used to go.

NOTE 2: The other row of 3 pins on the switch will get used in the next step.



3

Wire the stomp switch as follows:
(use a 3PDT stomp, and note how the switch is orientated in the picture)



NOTE: all mods must be powered directly from the 7809 or red wire of battery snap.