

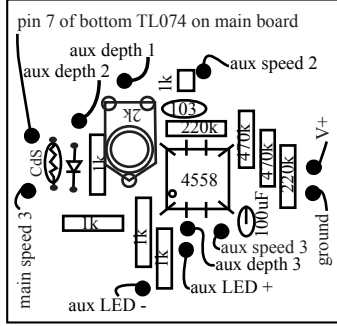
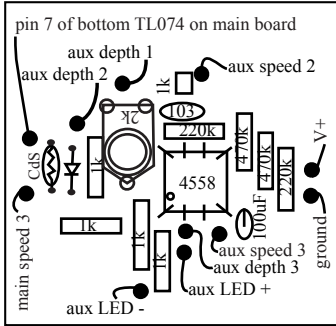
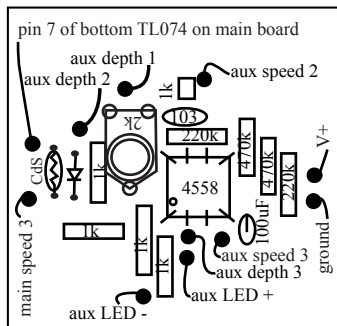
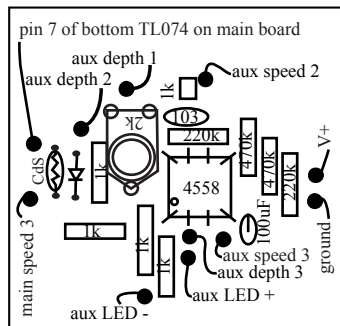
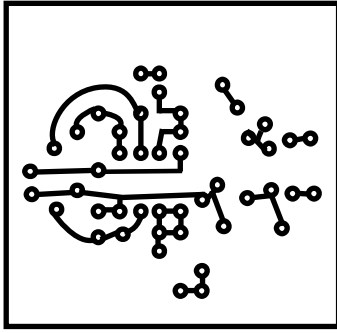
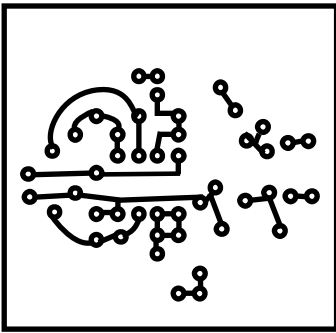
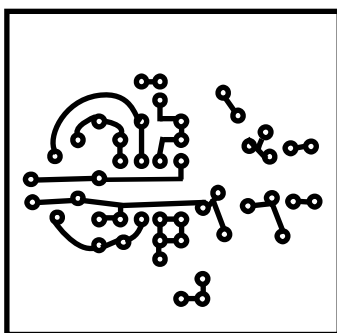
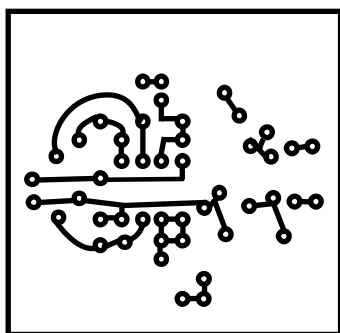
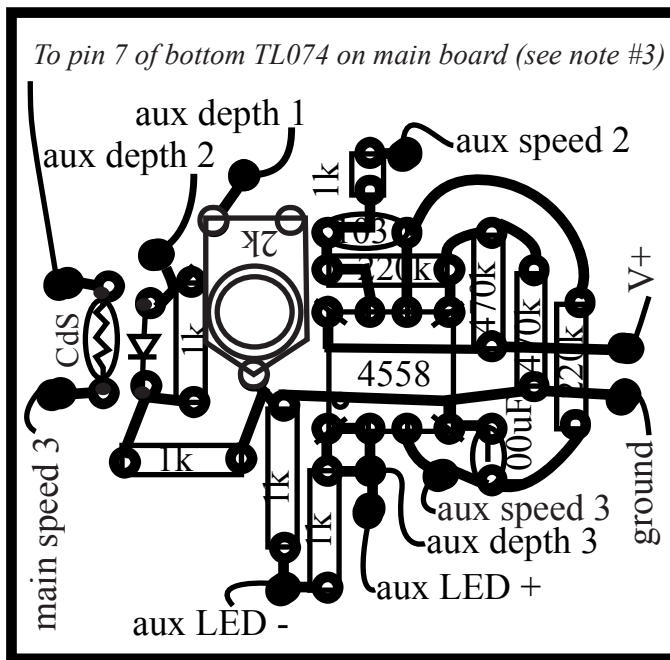
Aux LFO (modulate main speed) mod for Phaseur

www.commonsound.com
 non-commercial use only
 2005 dec 2

INSTRUCTIONS

Aux depth is 1k (lin)
 Aux speed is 100k (lin)

1. Wire up this board including the Aux Depth, Aux Speed, and Aux LED. Run ground and V+ from main board.
2. Piggyback a wire from "main Speed 3" on this board to the main Speed pot (lug 3)
3. Run a wire from "to pin 7..." to pin 7 of the bottom TL074 IC on the main board.



- 1 - LED
- 1 - LED clip
- 1 - 1k pot
- 1 - 100k pot
- 2 - knob covers
- 1 - 8pin IC socket
- 1 - 4558
- 1 - Rect LED
- 1 - CdS cell (<1k light, >100k dark)
- 1 - 2k trim pot
- 5 - 1k
- 2 - 220k
- 2 - 470k
- 1 - 103 (0.01uF) cap
- 1 - 100uF cap